

图 3-47 LTF 区中的珠光体  
(同一视场)

a) 硝酸酒精溶液蚀显 b) 热碱液蚀显

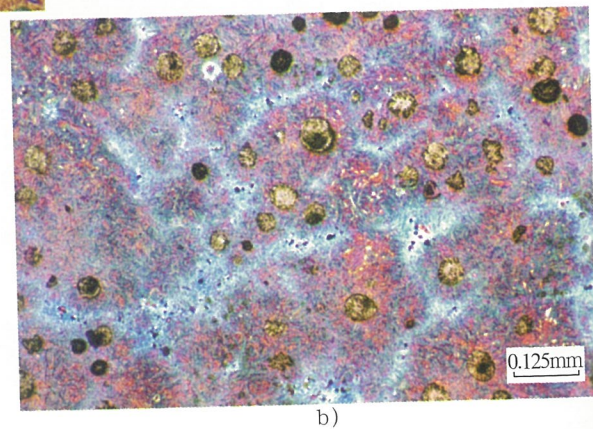
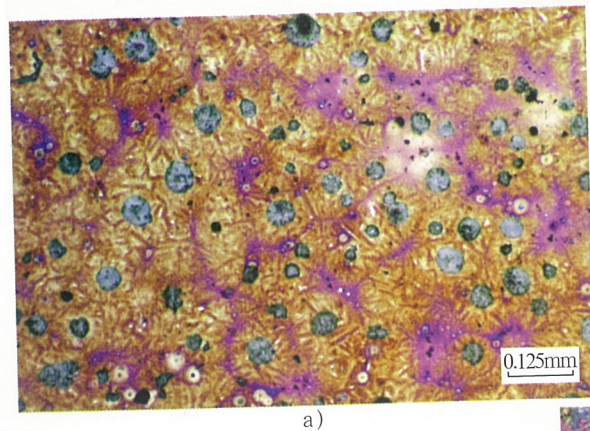


图 3-48 等温淬火的“白区”组织  
a) 热染 (240°C、5h) b) 热染 (300°C、5h)

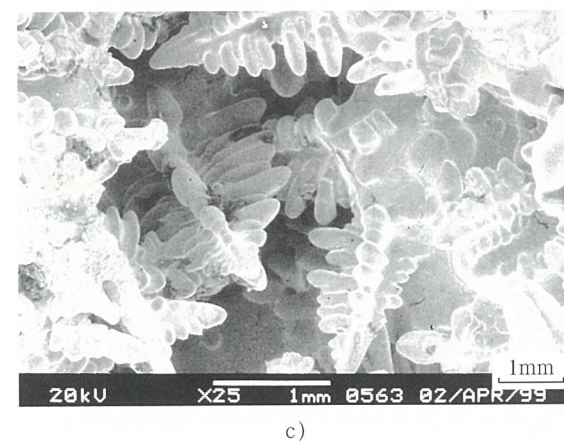
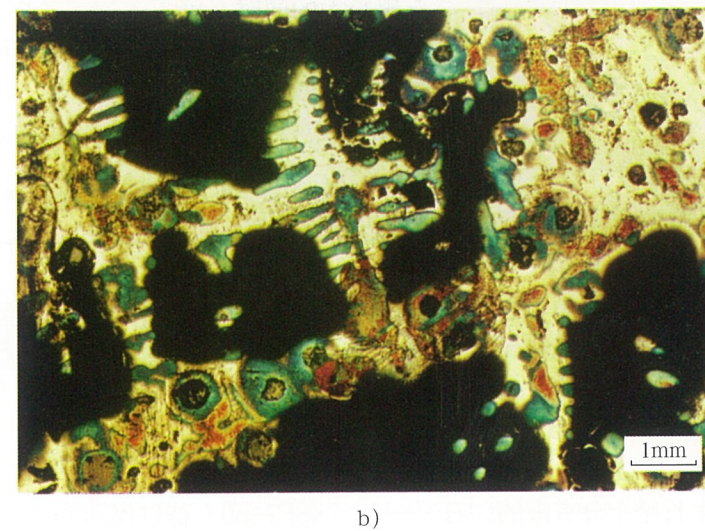
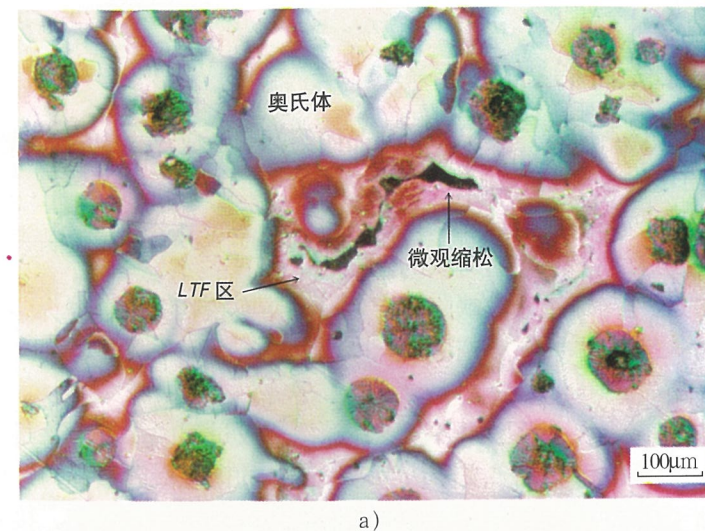


图 3-49 LTF 区中形成的缩孔  
a) 微观缩松 b) 宏观缩松 c) 宏观缩松 (扫描电镜观察)